



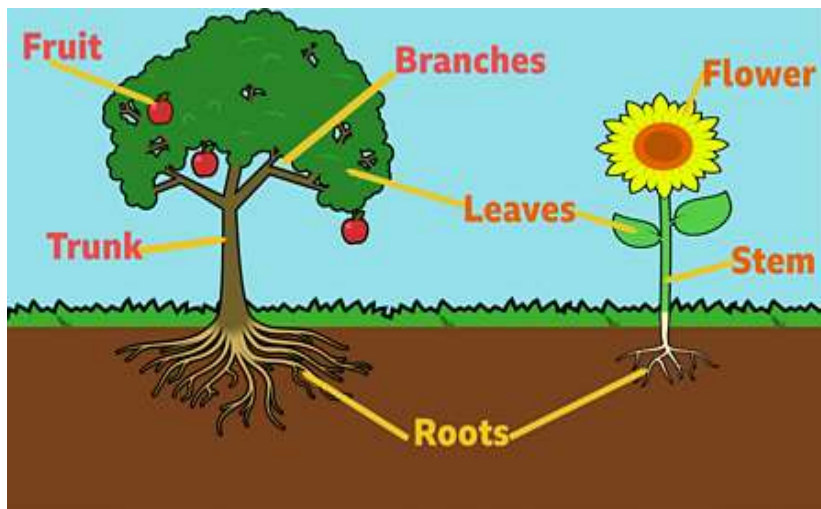
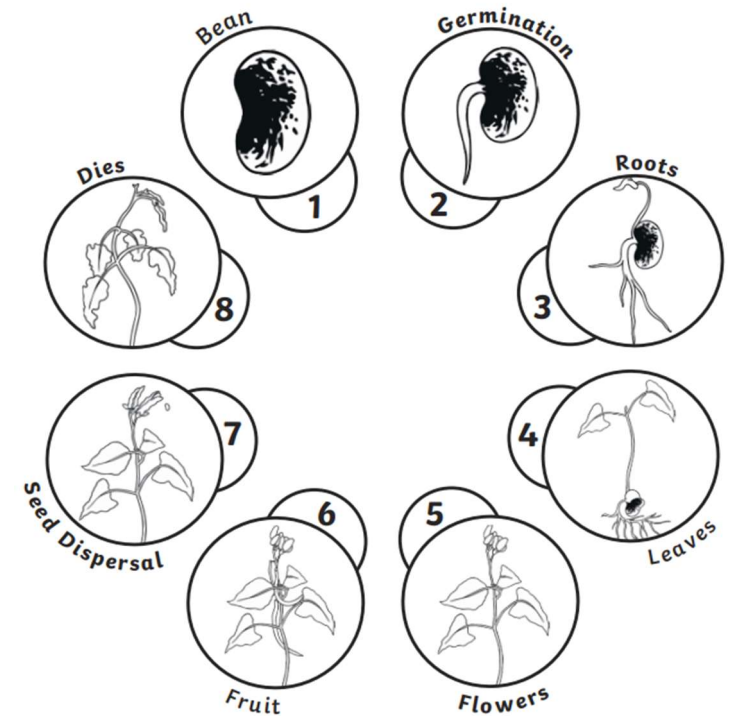
# Year 2 Science Knowledge Organiser – Spring 2

## Plants

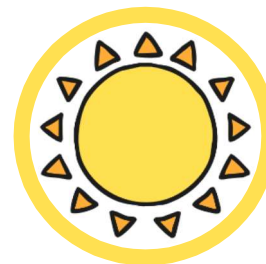
### Vocabulary

<b>Seed</b>	The small parts produced by plants from which new plants grow.
<b>Roots</b>	These anchor the plant into the ground and absorb nutrients from the soil.
<b>Temperature</b>	How warm or cold something or somewhere is. Some plants like it cooler and some like it warmer.
<b>Sunlight</b>	Light from the sun that helps plants to grow
<b>Deciduous</b>	Trees that shed their leaves once a year, usually during the season of autumn, when their leaves are mature, or fully grown
<b>Evergreen</b>	Evergreen plants are plants that never lose their leaves - they “stay green” all year long
<b>Germination</b>	When a tiny new plant bursts out of its shell after soaking up water.
<b>Nutrients</b>	Food or nourishment for the plant. They get this from the soil.
<b>Seed dispersal</b>	When the seeds move away from the parent plant. They can drop to the ground or be moved by the wind or animals.

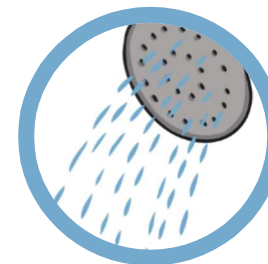
### The Life Cycle of a Bean Plant



### What does a plant need to grow?



Sun



Water



Soil